



SIBLEY COUNTY HISTORICAL SOCIETY



NEWSLETTER

Henderson, Minnesota 56044 Ph: (507) 248-3434

JUNE 2014

Volume 19, Issue 2

Inside this issue:

A Country Church	1
The Prez Sez	1
	6
Last Call	7
Curator's Corner	8
Thanks	8
New and Renewed	9
	10



Calendar of Events

Check our website for 2014 programs.

- Check Website for details
- June 24, Tues. 7 PM Museum
Vintage Postcard Collecting
Steve Briggs
- If you have suggestions or
comments on upcoming events
Contact Judy Loewe 507-248-3345
Calendar Subject to Change.

A VISIT TO THE OLD COUNTRY CHURCH THE ONLY ONE IN GREEN ISLE TOWNSHIP

By Eldrene Ebert

On June 8, 2014 my husband Ruben and I attended services in Zion Lutheran Church in Green Isle Township. This is the church where I was baptized and confirmed being the only one in the confirmation class in 1952.

As we left Arlington and approached Green Isle Township I noticed the tall steeple of the church in the background on my left. Immediately to the right of the highway in Section 35 we saw the old original cemetery. I always wondered why it was there because it is several miles southeast of the church. I thought of my heritage, my great great grandparents were buried there. They were also founders of Zion's congregation.

As we approached the church I couldn't help but notice the new cemetery, dedicated in 1911, behind the church. Memories came back of all the funerals I attended for my rela-

tives buried there. I remember the pallbearers carrying out the casket through the back door of the church all the way to burial spot while the church bell was tolling. You never forget that sound.

The roots of Zion reach back to 1866. According to *History of the Minnesota Valley*, by Rev. Edward O. Neil, there was already a school erected in Section 26 which also served as the church. This was on land owned by John Abraham and where settlers would eventually build the new church.

I have a collection of anniversary books from Zion, some written in German and some in English. I always enjoy reading the article written by Rev. Karl Reuter for the church's 50th anniversary. He obtained the information by interviewing the members who were early settlers. It is a colorful history of the beginnings of the area. The original text was translated into English for their 75th anniversary by Pastor R. W. Koepp. A quote from that book follows: "*The pioneers who elected to make this their home penetrated vir-*

(Continued on page 2)



The Prez Sez by Jerome Petersen

Thanks to all who came to our annual meeting in Gaylord at the Court-house. Holly and Roger Harjes gave us a lot of information about the USS Sibley, and how it got its name. They also told personal stories of connections they have with the crew and their families.

Most county residents are unaware of this history.

We have many artifacts in the Military Room at the museum from the ship. Harjes had been to USS Sibley reunions around the country for a number of years.



Holly and Roger Harjes



Only four crew members are still living, and they are getting too old to travel, so the reunions have ceased.

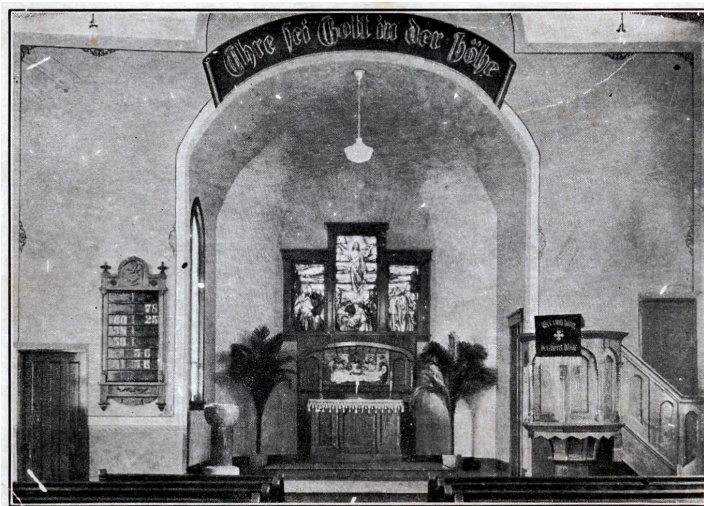
Steve Briggs gave us an update on the website, which he manages. Many people visit the site. I highly recommend trying it if you haven't yet. Becky Briggs told us the progress on the Ostrom project.

(Continued on page 4)



(Continued from page 1)

gin forest, skirted treacherous swamps, guarded against wild animal, made the acquaintance of peaceful and yet not always



New chancel added in 1927.



Redecorated chancel in 1965.

friendly Indians. Many a time hearts grew heavy, and eyes overflowed with tears at the oppressive loneliness and at the crushing dangers and difficulties of the wilderness."

The church had a different entry but the immediate welcome by the current members and especially by an old school friend made us feel right at home. The new entry was added in 1975. It included an enclosed entryway and narthex on the first level with a storage room, restrooms and enlarged entry to the basement level. It was so interesting to see the memorabilia they had in the display case, and the old school clock hanging on the wall.

Going into the church nave we recognized the old pews which appeared to be the same. The organ was now in front instead of being upstairs. Another big change from the 1940's was that the entire families were sitting together. I do not remember sitting with my Dad when we attended services. Usually the men sat to the right or in the balcony and the women and young children to the left.

The chancel has gone through a few changes, mostly in decorating. The original church did not have one. This was added in 1927 along with the sacristy. The interior of the old church was completely redone and the chancel equipped with new furnishings. The pastor made the hymn board frame and lectern which are still

there today. For an approximate cost of \$10,000 the church was transformed from a building no longer adequate to a beautiful house of worship. My mother was so proud of the fact that their confirmation was the first to be confirmed in the remodeled church.



First church, built in 1874

started sharing a pastor with St. Paul's.



Zion today. The same 1874 structure with many improvements in 143 years.

By 1883 a number of families in the western end of the parish also withdrew from the congregation for reasons of distance. It was a long way to church and it was especially difficult for them to send their children to school. They combined their efforts with New Auburn Township settlers and formed the Evangelical Lutheran Zion's Congregation (Eickschen's Church).

After services we reminisced in the old church yard and talked about how things were. The parsonage was moved away, Rev. Reuter's old apple orchard, where school children got apples for lunch, was also gone. The first pastor, F. H. Kolbe first lived at the home of John Ziegler. When he got married, a log parsonage was erected. In 1884 a new

parsonage was built. The old log house with the exception of the kitchen was used as a barn. A new and more modern parsonage was built in 1923. The old house was sold and a 30 by 34 home was finally completed at the cost of \$6,000. When the pastor chose to live in Green Isle the parsonage was sold and moved away.

The church is well built and solid. A tornado swept through the area in 1884 making a mess of the woods. The church was moved a bit on the foundation, but remained standing. In 1914 it was struck by lightening and again repairs were minimal.

The school was on the north end of the ground on the other side of the road. I attended this school for eight years. It was built in 1890 to replace the 1866 school. This improvement was badly needed to accommodate the 50 students enrolled. The school closed in 1968 and was torn down a few years later. A Sunday school program was introduced.

There was also a row of horse stalls or stables located somewhere near the school. The stables provided shelter for the horses while folks attended services.

Let's go back to the pioneers. Many of them were my relatives, namely the Ziegler's, Bullert's and Tuchtenhagen's.

(Continued on page 3)



(Continued from page 2)

John Tuchtenhagen passed away at a young age. His wife Louisa then married Fred Moskop. A list of those early settlers who made the area their permanent home is printed here along with their date of arrival; **1856** - Gottf. & Dorothea Bullert; Friederich Mielke; David Schauer, John & Rose Abraham; Frederick & Henrietta Hammerschmidt; Karl & Caroline Rucks; William & Caroline Schauer; Karl & Charlotte Koernig; Karl Bruch. **1857** - David & Rose Bullert. **1858** - John & Marie Ziegler; Karl & Rose Selke; John & Louise Tuchtenhagen; Christian & Justine Schauer; John & Louise Goebel. **1864** - August Mueller. **1865** - Martin & Justine Winter. **1866** - Daniel & Justine Boettcher; Michael Brockoff, Michael & Caroline Winter; Gottf. & Henrietta Scharping; Frederick Fahrwald. **1868** - Frederick Moskop; Frederick & Caroline Spannaus; Frederick Joep; John & Eva Jahr. **1869** - John & Wilhemina Bluemke; Michael & Anna Brockoff; Michael & Augusta Hardel; John Mueller; William & Louise Wegener. **1871** - Karl Ristau, Karl Nimtze; Ferdinand Wolter. **1872** - Frederick & Marie Doering. **1874** - Daniel & Wilhemina Kriese. **1875** - Karl & Hen-



David and Rose Bullert

rietta Dupslaff; Karl and Wilhelmina Muehlstedt. **1876** - Paul & Eva Lucht; Julius Schwartz. **1877** - Karl Muelling; Ferdinand Tabbert. **1888** - Paul & Justine Schwartz.

These settlers depended on visiting pastors coming through. Representatives of the Methodist faith came to the various homes to preach and baptize children. The settlers were Lutheran and wanted to retain that faith. Toward the end of the 1850's William Schauer and John Abraham requested Pastor Rupprecht from Hamburg to conduct services in the various homes, though already in 1866 a school was erected which also served as the church. He began his services in November of 1861, coming on foot and being taken home again by oxcart. Because of the difficulties of travel the pastor of Arlington Township also helped out.

The settlers were determined to have their own pastor and in 1871 a call was sent to Pastor F. H. Kolbe from St. Louis, MO. He accepted the call and made the long journey to MN. He was installed February 11, 1872.

The first church was built in 1874. The school was moved to a new location. Michael Winter, Karl Schauer and John Ziegler were on the building committee. The church has hand hewn beams. The plans did not include a steeple, but timbers had been so generously supplied that at last the steeple also stretched heavenward. The building was completed and paid for in 1875 for a cost of \$2,000.

The Arlington Enterprise of July 29, 1971 did a full page feature article for Zion's 125th Anniversary. In this article Pastor H. J. Malotky states that: "Zion has the same problem that other rural



Fred and Louise Wolter Tuchtenhagen Moskop

churches have, smaller families and bigger tractors.

In town they are building houses while the population of Sibley County drops.

But there is also a plus side for the rural church. If you join a larger church, you are often 'lost in the shuffle'. In your home church you meet your neighbors and friends. It may be for this reason that we notice a 'fierce loyalty' in many rural churches."

In 1991 the women were given the right to vote. After having a Ladies Missionary Aid for 49 years, it was disbanded in 1994. Numerous other things changed at this time such as the joint elders meeting with St. Paul's, introducing the legal size worship folders, monthly parish newsletter and calendar, and doubling the number of communion services. Zion's continues to share a pastor with St. Paul's and on special Sunday's the choir from St. Paul's performs in both churches.

In 1996 remaining surnames of the pioneers appear to be: Boettcher, Brockhoff (Brockoff), Bruch, Bullert, Goebel, Martin, Schauer, Schwartz, Tabbert and Ziegler.

The church is pictured in the book *Churches of Minnesota*, photographed by Doug Ohman with text by Jon Hassler. A nice picture taken from the west side shows the church, parsonage and barn.

Long term pastors were: Pastor G. E. Ahner, 1879-1889; Rev. Karl Reuter, 1900-1943; Pastor H. J. Malotky, 1952-1973; Rev. Bernard H. Becker, 1973-1988; Pastor Herman R. Hanemann, 1988-2000; Pastor Erwin C. Sprengeler, 2001-2013.

Information was gleaned from the church anniversary book. There is a lot more, I only scratched the surface.



(Continued from page 1)



Above; Shirley, Top Middle, Myra, Top Right, Marge, Below her is Mary Brandt, and Bottom Middle is Bea Tews.



CORBEL ROTTED AWAY



EXPERT ON A HOUSECALL

corbel, and what a rotten one looks like. Where would you buy a new corbel? Target didn't have any. Cabela's either. Sharon called an expert/professional, and he is on the case.

Dorothy had invited several teachers to our meeting as guests of SCHS. They had contributed stories and photos of their experiences with Country School. Those attending were; Myra Bushard of Gibbon, Mary Brandt of Gaylord, Bea Tews of Arlington, Shirley Rath of Buffalo Lake and Marge Lindstrand of Winthrop. Each of the ladies told us of some of their memories. The oldest lady in this group was in her nineties. The other *girls* were younger, but not too much! We were so glad that they could come and were willing to speak to our group. You will be able to read more about them in the book when it comes out!

The winners for the drawings at the meeting were; Harriet Traxler's book, *A Murder in Faxon*, Jan Lundgren and Ruben Ebert: Sibley County Pitcher, Myra Bushard: Porch Party Invitation with a guest, Bea Tews and Pete Pinsky: New Member Winners, Darrel and Jackie Alsleben of Arlington (named by Bruce Polzin), Holly and Roger Harjes (named by Holly Harjes): Museum model, Rene Rutschmeyer.



Verjean, Arlene, Diane, Maureen, Karen

Sharon Haggemiller had a guide training session in May. It started with a light supper. She told the group



FLASH!! The days are getting shorter already.

After delaying the costly project for a few years, painting the trim on the museum is in progress. It didn't take long for the bad news to start. Sharon sent me an email that a corbel was rotten. Hmmm! And what is a corbel you might ask. The photo shows a



some of the duties of guides. The group toured the museum to familiarize themselves with the building and artifacts displayed throughout. All new guides will be with experienced people at first. It is so simple even I have done it. They should all hope I will not be the experienced person working with them.

Henderson Pride Day, a community clean-up day was successful. We had a number of volunteers at the muse-

(Continued on page 5)



(Continued from page 4)

um cleaning up leaves, hauling away junk, pulling weeds, trimming bushes and raking. Mary and I helped that day too. Sharon S. took a photo of me pitching in with one of my talents. It is on



Diane, Mary and Sharon H. We do not discriminate, ladies are allowed to work too.

the website. At noon there was a potluck dinner at the Community Center where a wonderful lunch was served. There were close to 200 volunteers signed up to work around town. It turned out to be a perfect day, sunny and nice. Besides cleaning up outside we got rid of some old boards and junk that was stored the basement.

For our May program,



Judy



Diane.



Bushwacker Lowell



This is Eileen Brandt, the organizer of Henderson Pride Day. She does much of the gardening around the museum with flowers and potted plants. We appreciate her landscaping talents.

Sharon S. took all the photos, so she is not on them, but she worked too. We let her do the heavy lifting.



Larry, Curly and Mo?

No, Larry, Mary and Lowell

several students at the New Country School presented a program about their tour to sites of the 1960s Civil Rights Struggle. They saw the Lorraine Motel where Martin Luther King was assassinated, the school where US Marshalls forced integration while some whites jeered and the Baptist Church where a bombing killed 4 young black children. They were able to interact with blacks who were involved with racial issues of that era. A question and answer session followed their excellent PowerPoint presentation. The students were very articulate in relating their feelings and explaining what they saw. Other places they toured were New Orleans and St. Louis. While in the Arch, their van was broken into and belongings stolen, including a laptop with many of their notes. The audi-

(Continued on page 6)



(Continued from page 5)

ence number at the program was disappointing. Judy has a wonderful array of monthly programs and tours, and most all are free. Maybe if we pay people to come more would show up!



Porch party season is back, one of my favorite seasons! What a great group to work and party with. Our grand front porch is a perfect place for these events. We have room for about 25 people. This started a number of years ago on a nice summer day, we thought we could eat our lunch on the porch. Next time we thought, lets call it a party and invite other workers. It will be a potluck but lets keep it simple, no hotdishes*, just finger food, hors d'oeuvres, some cheese, maybe some dessert, fruit etc. So we have our regulars which number about 20, and then we have a few guests, people who have done some specific jobs for us or contributed to our newsletter. We had invitations in a drawing at our annual meeting. When Charles and Donna Meyer are in town, they are guests and always bring us some wine. Charles named Millie as our Wine



Eldrene, Pat and Arlene watching the floor show.



Artist Roseann at work. The cake is one of her creations.



This stuff looks good enough to eat!

Steward! Steve Briggs is assistant wine steward. Age does have its privileges. The food the group brings is always colorful, interesting and unique. Flowers and tablecloths, -and wine too. Ain't we got class! Ya betcha!

*For you non-midwesterners, a *hotdish* is a *casserole*.

If you haven't done so yet, visit our website; <http://www.sibleycountyhistoricalmuseum.com/> Steve is updating and adding things on a regular basis. He recently added photos "See our museum up close". He also added information and photos of "Gaylord Photographers 1960s-1990s". You can also check our Judy's upcoming programs. There is information about the items that came from the County Auditor's Office. Not only is he Assistant Wine Steward, he is the Honorable Herr Vebmeister. He does well in both positions.

The CSP (Country School Project) continues to keep us very busy. We have put hundreds of hours gathering photos, information and conducting interviews. It has been a enjoyable experience for me, hearing the stories and seeing all the photos and documents that have been given us. I think people who buy our book will be delighted having it in their collection of books. There are still many folks who attended country school, and a few teachers from that era, five who I have photos from our annual meeting. Water pails, outhouses, woodsheds, inkwells, overshoes, lunchpails, buggies, water pumps—terms not familiar

(Continued on page 7)



(Continued from page 6)

to today's students. The data we get is consolidated by township, and then sorted further by district. Dorothy does all this. I have told her many times I am afraid her head will explode. Arlene and Eldrene compose the text, first by the township and then each district. Dorothy has a Microsoft Publisher program

The last Sibley County Township to be organized was Moltke, once the western part of Bismarck. Moltke received its name in honor of Prussian Army Field Marshall, Count Helmuth von Moltke. He was the military strategist during events leading to the unification of Germany in 1871. A letter dated July 16, 1878 was directed to Christian Didra, Sibley County Auditor stating, *Sir, enclosed find petition for the organization of the territory west of the town of Bismarck. We wish to have it named Moltke, please bring it before the Board and have it acted on as soon as possible as we are preparing to have a grand celebration on the day of Baptismal. You know that Moltke should follow Bismarck therefore the name.*" The letter was signed, *Yours Truly John Atrops.*"

Most of the signers of the petition for organization of "Bismarck", as they spelled it, were from several German states as were the petitioners for the organizing and naming of Moltke. Many would eventually seek American citizenship but in these early years of settlement they were very much interested in the politics of their homeland. History names Otto von Bismarck the political leader responsible for German unification.

Settlers arrived and took claims, or purchased land in the following order: C. William Hoefer in 1875; J. P. Blake in 1876; John Atrops in 1877; August Papke fol-

Last call for Country Schools Book Pictures

The Sibley County Fair is fast approaching (July 30 thru August 3) and with it will come the final days of gathering information for the "Country School Book" that we have been working on for over 2 years. We are planning to have the book published in time for Christmas. Anyone who has not yet had an opportunity to share information or pictures about "their" school, should plan on visiting us at the fair or contacting us at the museum (507-238-3434). Our address is: SCHS P O Box 407 Henderson, MN 56044. Our e-mail is schs1@frontiernet.net or schs1940@hotmail.com. We'd love to hear from you.

We will not be accepting any new information for the book after the fair. That will give us time to prepare the over 500 pages of information that we have gathered. While at the fair you will be able to view our efforts thus far. We will have copies of some of the chapters that are nearly ready, along with many pictures. You may even find one of yourself, your parents or grandparents.

We will be taking orders for the book at the fair, or by mail, e-mail etc. Lots of neat information has been gathered; you won't want to miss having it. And it would make a great Christmas present for the younger generation who have not had the "Country School" experience. There will be a savings if you pre-order. The book will have a hard cover, some colored pages, 8th Grade Graduation pictures and lots of other school pic-



tures, maps and history of the towns, townships and districts of Sibley County. Stop and visit us at the fair, we are in the Cub Scout building just east of Porky's Ham House where we have been the past 4 years. This year we will be right next to the new entertainment/ building which the Fair Board built this past year.

Here are some districts that we need more information and pictures:

Alfsborg, District 68; Bismarck, District 77;
Dryden, Districts 17 & 18 Faxon, District 22;
Henderson, Districts 4 & 5;
Jessenland, Districts 11 & 43;
Moltke, District 75; New Auburn, District 74;
Severance, District 78; Transit, District 44;
Washington Lake, District 29, 71 & 80.

We are especially looking for pictures of the school-houses.



District 12, Jessenland, 1899, Frank Norman, Teacher

outlined, for a township. Then pages are assigned for each district in that township. Eldrene has all the legal descriptions and dates. Arlene has the names early settlers and other information

(Continued on page 10)



Curator's Corner

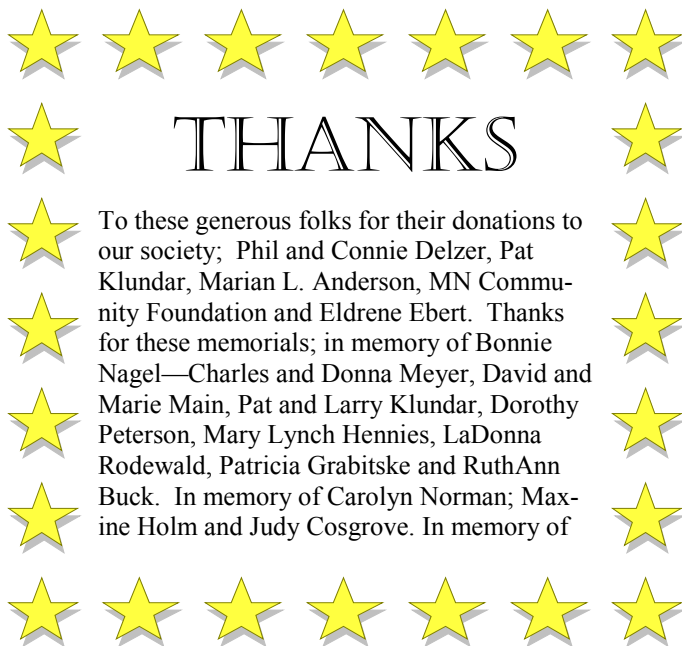
By Sharon Haggemiller

A guide training session was announced in the last newsletter. This was very well attended by 24 potential guides. Some have been helping express our Sibley County History for years and 8 more have joined the forces to volunteer their time on Sunday afternoons. They are: Pat Klunder, Roseann Nagel, Darlene Weckwerth, Fred Lobitz, Virgene Schendeldecker, Karen Klenk, Diane Neubarth and Maureen Krumrey. Thank-you for volunteering to help at SCHS. Marie and I are anxious to get them into the schedule as soon as possible to help them gain experience of the job. There is no limit of the amount of guides that we can have. Volunteering has many rewards; give it a try! Call the Museum at 507-248-3434 to sign up!

Painting the exterior trim on our museum building has been an issue for a couple of years. This is the year to undertake the project. The peeling paint was a sign that the job needed to be done ASAP. The Museum building is the former A.F. Poehler home built in 1884. Painting is an important part of the building's preservation. Glen Deno of Gaylord and his crew have been busy



scraping the existing paint and priming, eventually painting which will give the building a fresh look. In the process, he found some rotting wood where the birds have been using this as their home. As Sharon Shimota and I were getting ready to open the Museum on Memorial Day, sweeping the porch steps and sidewalk, we noticed the birds flying back and forth onto the roof of the porch. As we stepped back to access the situation we saw the spot



To these generous folks for their donations to our society; Phil and Connie Delzer, Pat Klunder, Marian L. Anderson, MN Community Foundation and Eldrene Ebert. Thanks for these memorials; in memory of Bonnie Nagel—Charles and Donna Meyer, David and Marie Main, Pat and Larry Klunder, Dorothy Peterson, Mary Lynch Hennies, LaDonna Rodewald, Patricia Grabitske and RuthAnn Buck. In memory of Carolyn Norman; Maxine Holm and Judy Cosgrove. In memory of

where the birds were flying to. However, we didn't realize how extensive the damage was. This will need to be fixed before Glen and his crew can finish painting in that area. The building is on the National Register of Historic Places which means that the exterior work needs to be done according to the Secretary of Interior's Standards of Rehabilitation rules. Deteriorated historic features can be repaired, but a severely deteriorated feature such as the corbel on the trim board must be replaced with a new matching piece of design, color and texture. This type of work calls for expert experienced contractors who have the special tools to make the replacement pieces. We here at SCHS are so fortunate to have a few consultants and contractors in our membership, namely, Lowell Nagel, Pete Pinske and Ian Sing. While the new corbel is being made, Glen and his crew will continue painting as weather permits.

Once all the painting is done, does anyone know of a deterrent to keep the birds from building nests on the ledges? Birds have found nesting spots all around the building especially under the porch roofs. Lowell has placed wire cages into these areas which has at least eliminated the messes on the porch floor. Now the birds have moved to the next level, 3rd floor. Will we ever win the battle??

Stop by to visit on Sunday's 2-5 p.m. or Tuesday evening's 6-8 p.m. Bring a car load of people; an educational way of spending time to view our artifacts from the late 1800's to the early 1900's.





Arthur & Barbara Straub
 Larry & Rita Friederichs
 Sharlene Friederichs
 Beverly J Woods
 Ruth Ann Nytes
 Sandi & Steve Andersen
 Susan M Morrisette
 Dennis & Kristin Schultz*
 Mary & Edward Krska
 Marian L Anderson*
 Ed & Dorothy Kruse*
 David & Marie Main
 Latter-day Saints, Church of
 Suzanne M Brown
 John O Plahn*
 Leo Berger
 Larry & Sharon Sickmann*
 John & Jacquelyn Mccoy
 Maureen & Gordon Krumery
 Kris & Shane Zeppelin
 Phil & Connie Delzer
 Edgar Taggatz
 Ron & Kay Klement
 Mildred May Doering
 P.D. Steckman
 Diane D Neubarth
 Arlene M Marek
 Lisa & Tom Pfarr
 Jeff & Joan Zumhofe
 Darlene Weckwerth
 Lorraine K Steeber
 Roland & Denise Pogatchnik
 Ed & Arlene Pinske
 Carol E Jackson
 Joan & Dale Ewald

LeSueur MN
 Gaylord MN
 Brooklyn Park MN
 Gibbon MN
 Henderson MN
 Henderson MN
 Arlington MN
 Arlington MN
 Naperville IL
 Gaylord MN
 Apple Valley MN
 Gaylord MN
 Salt Lake City UT
 Sacramento CA
 Mound MN
 Henderson MN
 Arlington MN
 Irvine CA
 Glencoe MN
 Litchfield MN
 Minneapolis MN
 Gibbon MN
 Gibbon MN
 Edinia MN
 Henderson MN
 Hutchinson MN
 Arlington MN
 Arlington MN
 Winthrop MN
 Arlington MN
 Palatine IL
 W St Paul MN
 Gaylord MN
 Eden Prairie MN
 Hutchinson MN

Ken & Donna A Gleisner
 Mary Ludowese
 Richard & Janet Graupman
 Patrica M Klunder*
 Roger H Kottke
 G R Ducharme
 Albert & Arlene Karels
 Douglas & Iris Parrott
 Beverly E Christensen
 John & Marcia Driers*
 Vernon & Renee Ruschmeyer
 Charles Woehler
 Patricia Judd
 Karrie J Hanson*
 Leon Stadtherr
 Janet F Lundgren
 Marlys Gaucher
 Dale & Patricia Ericson
 Gloria Sinell
 Ursula & Darren Kroells
 Don & Gail Nuessmeier
 Darrel & Jackie Alsleben
 Kathy Dietz*
 Howard & Frances Armstrong
 Darwin & Susan Buerkle
 Jeffrey Ducharme
 Thomas & Patricia McCarthy
 Alvin & Diane Rostberg
 Lawrence & Phyllis Crawford
 Kevin Pioske
 Don & Betty Strobel
 Ron & Kay Klement
 Tiffany Reinitz
 Linda F. Cancio

New Ulm MN
 Hutchinson MN
 Gibbon MN
 Henderson MN
 Alexandria MN
 Henderson MN
 Henderson MN
 Gaylord MN
 Chanhassen MN
 Prior Lake MN
 Dassel MN
 Arlington MN
 Waseca MN
 Westfield NJ
 Winthrop MN
 Gibbon MN
 Arlington MN
 Gibbon MN
 Gaylord MN
 Green Isle MN
 Arlington MN
 Arlington MN
 Gaylord MN
 Gaylord MN
 Gibbon MN
 Henderson MN
 Winthrop MN
 Henderson MN
 Gaylord MN
 LeSueur MN
 Henderson MN
 Gibbon MN
 Henderson MN
 Sacramento CA

Membership Form

I would like to become a member of the Sibley County Historical Society.

NAME _____ SCHS TREASURER

ADDRESS _____ 49858 316 ST

_____ Winthrop MN 55396-2038

PHONE _____

E-MAIL _____

Individual--\$20, Family-- \$25, Business-- \$50 Send to:

Check your due date on the mailing label. Membership dues are as stated on the form. Please use it to renew your subscription or pass it along to anyone who is interested.



Regular meetings are held at 7:00 p.m. on the fourth Tuesday of the month, March thru November at the museum in Henderson. The public is invited. The museum is open to the public for tours on Sundays from 2:00 p.m. to 5:00 p.m. June thru October and by appointment.

Send articles, announcements, photos and comments to the SCHS Newsletter, P.O. Box 407, Henderson, MN 56044 or Email: schs1@frontiernet.net





700 Main Street
P.O. Box 407
Henderson, MN 56044
Phone: 507-248-3434
Email: schs1@frontiernet.net

SIBLEY COUNTY HISTORICAL SOCIETY BOARD

Jerome Petersen	President
Dwight Grabitske	Vice-President
Dorothy Peterson	Secretary
Ray Meyer	Treasurer
Sharon Haggemiller	Curator
Judy Loewe	Marie Main
Millie Johnson	Sharon Shimota
Ruth Ann Buck	Mary Petersen



(Continued from page 7)

about each township and district. The piece below is an example of how township segment of the book starts. Much more text follows before the district information begins.

Dorothy then entrusts me with the file. (I know what your are thinking, her head DID explode) I add the photos and memories she has typed for me, and ready to insert. I then send the file to Arlene, Eldrene and Ruth Ann for editing and proof-reading. They find mistakes and corrections, I make the changes and we do it all again. Then we take the file to the museum and



**District 60, Moltke, 1945, Recess Time,
Miss Larson, teacher**

do more proofreading on the 50" TV so we can all see at once. You might think there can't be any mistakes by this time. You'd be wrong! Ruth Ann and Dorothy are scanning photos, consolidating information and doing a hundred other

chores connected with this book. I believe we would all agree this is a much bigger project than we anticipated. But we are getting better at our jobs, and so far we have not come to shouting matches or blows with each other. It must be moving along nicely.



District 34, New Auburn. Luckily they had some trees for a windbreak.

Dorothy has talked to several printers, and she has selected one. We have met with their rep for some initial discussions. We had a short tour of their plant where they were doing brochures for the Miami Heat basketball team and an FBI booklet among hundreds of others. Our CSP book will be another feather in their cap. Our book projects to be 500 pages, hard cover, indexed and maybe ready by Christmas.



The end to this piece has finally come . *Rommie*