

SIBLEY COUNTY HISTORICAL SOCIETY NEWSLETTER

Henderson, Minnesota 56044 Ph: (507)248-3434

JUNE 2010

Volume 15, Issue 2



Inside this issue:

Addition Dedication	1
The Prez Sez	1
Wild Bill Kahlow	2
Building Progress	6
Thank You	6
Dreams Can Come True	7
Annual Mtg Photos	8
Annual Mtg Photos	8
New and Renewed	9
Summer Tour info	10
Sibley County Fair	10

Calendar of Events

by Judy Loewe

- **June 22**, - Tour and Movie with New Auburn Historian Jon Rivers at Maple Lake and more See Page 10
- **July 27, 7:00PM** Electric Coops by Tom Graham at the museum
- **August 24 7:00PM** Haunted History and Locations by Chad Lewis at the museum
- **NOTE NEW STARTING TIMES—7PM**
- If you have suggestions or comments on upcoming events Contact Judy Loewe 507-248-3345 **Calendar Subject to Change.**

SIBLEY COUNTY HISTORICAL SOCIETY PRESENTS... DEDICATION OF OUR NEW ADDITION TA DAA

SUNDAY JUNE 27TH 2010 2PM

WE WILL HAVE A SHORT DEDICATION CEREMONY

OUR NEW ADDITION WILL BE OPEN FOR YOUR INSPECTION. SEE OUR GENEALOGY ROOM. CHECK OUT OUR STORAGE ROOM. LOOK AT OUR NEW KITCHEN. HAVE A DRINK AT OUR NEW FOUNTAIN. TRY OUT OUR NEW BATHROOM. NOTICE OUR COMPUTER AND OFFICE AREA. THEN TOUR OUR MUSEUM AND ESPECIALLY NOTE THE SUMMER KITCHEN TRANSFORMATION AND OUR **NEW OLD** MUSIC ROOM WHICH WAS OUR OFFICE, GENEALOGY AND RESEARCH ROOM AND JUNK ROOM UNTIL MARCH 2010. AND WHEN YOU ARE DONE, HAVE SOME REFRESHMENTS ON OUR RECENTLY PAINTED FRONT PORCH. WE HAVE A SPECIAL TREAT IN STORE FOR YOU THERE.



The Prez Sez by Jerome Petersen

There is a lot of ground to cover since last newsletter. Our annual meeting was well attended with 75 people. Charles and Donna Meyer were in Minnesota at the time and were able to come to the meeting. Steve Briggs had an outstanding program on searching for MIAs in New Guinea. We received many good comments on his presentation. He started with some statistics; MIAs from WWII—74,213, from Korea—8,044, Viet Nam—1,720 and the cold war 165. Steve's slide show included

Steve Briggs



downed WWII aircraft in the jungles, dog tags of airmen who died in crashes, native villagers

(Continued on page 4)



W.R.KAHLOW

AKA Buffalo Bill

Research by Arlene Busse

In the December 2009 Newsletter, Mary Lou Brenke wrote about her great uncle, William R. Kahlow and provided family information with photos. Part of her story summarized an interview by Win Working in the 1920s. Working graduated from the Henderson High School in 1903, worked for newspapers and in the 1920s was a freelance journalist concentrating on interviews with elderly pioneers. His stories were published in area newspapers including the *Gaylord Hub* and the *Henderson Independent*. The *Gaylord Hub* of Feb 15, 1929 has these quotes from Kahlow:

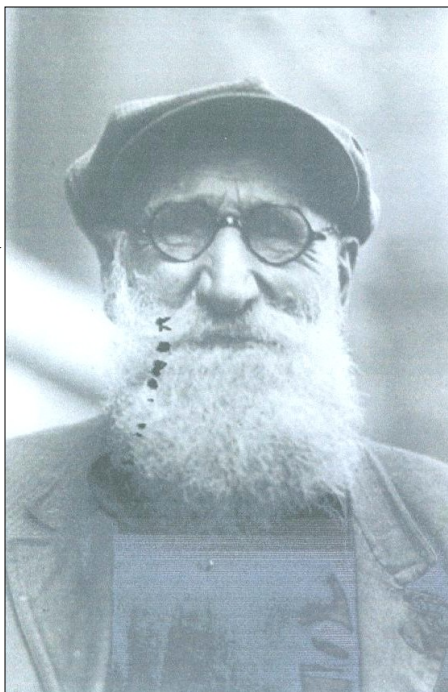
It was 1853. I was too young to hold a claim, but my brother Fred and I had gone with my father, Fred Sr., to take land and perhaps hold it until we were of age. We selected three claims on Lake Titloe and Father undertook to get things started toward improving the land.

One day Ed Price, who lived in Henderson, came along and talked with my father and I for a while. "How much do you want for one of your claims?" he asked. Father couldn't understand English so we explained to him what Price had said. Price then offered Father \$30 for his quarter section. "Tell him he can have it," Father said. They made a deal right there, and Father and Fred and I walked off and left our claims. Fred and I didn't try to sell ours, but simply abandoned them. I learned afterwards that Price sold Father's claim to Chapin some time later for \$1,500 and that Chapin in turn sold it for \$2,500. There were some good timber on it as Father had selected the land for that reason.

It may be difficult for one not familiar with frontier conditions here to visualize the situation. It was not merely a case of hanging onto the land and doing the best one could. Certain improvements were required and every move made cost money and money was scarce. Of course, if any of us had known what was to come in a few years we could all have made considerable money, but that isn't the way things go in this world."

As Mary Lou stated, the Kahlow family settled in Tyrone Township

in LeSueur County, across the river from Henderson. Kahlow's first big adventure, according to a Win Working story in the *Henderson Independent*, dated April 17, 1925, occurred in 1857. Former Minnesota Territorial Governor, Alexander Ramsey, was sent by the Federal Government to pay annuities to Dakota Indian bands that had signed treaties in 1851. Ox carts loaded with \$30,000 of trade goods were managed by teamsters. Frontiersmen, including 20-year old Kahlow, were hired to guide the expedition's military escort and to supply fresh meat. The area of present day Grand Forks, North Dakota was their destination. The expedition was a success with a safe return.



W.R. Kahlow known as "Buffalo Bill" claimed his beard thwarted mosquitoes and flies as did the hairy face of wild buffalo he emulated

Another special trip by Kahlow occurred on Christmas Eve in December 1862. The hanging of 38 Indians at Mankato was scheduled for Christmas Day. With his livery business partner, brother-in-law, E.B. Haney of Henderson, he headed to Mankato with extra ammunition for the military and other officials. There was concern there might be an outbreak of trouble at the public execution.

Kahlow worked as wagon-master for a number of Poehler and Welch wagon-train trips. Henry Poehler and Thomas Welch had come as young men to Henderson in the early 1850's and had become established in several business ventures. In the 1860's they were awarded government contracts to carry supplies to western forts. Wagons were outfitted at Henderson and many area young men were hired to work on the expeditions.

The story of one trip in particular was related to Win Working and quoted in the May 8, 1925, *Henderson Independent*.

I was appointed wagon master of the government supply train of 140 ox-teams. My brother-in-law, the late E. B. Haney of Henderson was my assistant. We had one teamster for each three teams and a military escort. ...There were about 150 men in the party. The supplies were shipped to Granite Falls and I assembled my train at Rush River, loaded my teams at Granite Falls and set out over the prairie. We were well equipped for emergencies and were prepared to camp on short notice when night or bad weather overtook us. We struck out in a westerly direction through Minnesota, fording and ferrying the streams we encountered. ...I recall that we saw a herd of about forty buffalo near a stream, we had plenty of provisions, so I told the boys to shoot only one buffalo. Some of the younger fellows would have liked to ride into the bunch and bring down a few more, but we had no time for buffalo hunting. Crossing the Red river, we turned north toward Devil's Lake, which lies about seventy-five miles

(Continued on page 3)



(Continued from page 2)

west of the present site of Grand Forks. It grew quite hot before we reached the lake and the men were glad when the journey was ended.

"After a few days I set out with another train to get supplies at Fort Stevens on the Missouri River to be returned to Fort Totten. Henry Poehler took the original train back empty to Henderson.

Tom Welch kept a ledger, now at the museum, which has a section devoted to cattle drives and wagon-trains. Some items were for this 1867 trip. Other pages noted; wages of \$15 per month, \$8 for a dog, 60 cents for one pair of "goguls" (sunglasses?) and "blankeds" (blankets) for two of the men at \$2.50 each.

Bill Kahlow was an extraordinary man. He came from an adventurous family! According to family lore, his father, Frederick, won a lottery back in German in the late 1840s and used the money to bring his family to America. They settled first in the Springfield, Illinois area, then on to St. Paul by oxcart. By then the young adults in this family were conversant in English,

perhaps were able to read English or German newspapers and had learned of cheap government land newly available in Minnesota and so by riverboat they came to Henderson about 1853. Bill worked on riverboats, wagon trains, was involved in the Indian warfare and the livery business, enough for one man for a lifetime, but not for Bill. Lure of the far west led him to travel to New York, then take a ship to Central America via the Atlantic Ocean. There he walked across the rugged jungle terrain where the Panama Canal would one day be sited.

His western adventures included railroading, pioneering in the states of Washington and Oregon, hotel building, rearing a family and fatherhood again when he was in his 70s. In the 1920s the urge to visit family and friends brought him back to Minnesota where he lived out his days at the home of his nephew in Tyrone Township, east of Henderson.

Mary Lou ended her story last December with the death of Kahlow in 1929 at the age of 92. Never in military uniform but a veteran in the employ of the government and the army, he was therefore laid to rest with full military honors in Brown Cemetery in Henderson.

Expended Devil's Lake			
June first 1867 Cattle Exp Dr			
June	13 th	Dr Poehler & Bro	235.00
"	14 th	J Kellogg to Buy Cattle	1000.00
"	15 th	Dr. Welch Paid	2.65.00
Bill			\$13.00.00
June	15 th	Dr. Poehler & Bro	Dr
		to Cash Pr Express	\$3694.26
Bill	18	Paid at St. Peters by Welch	1.25.
"	18	1 Pr Cattle " Welch	1.50.00
"	18	3 Wagons & 3 Chains ^{\$225.00}	275.00
Bill			
June	27 th	Dr. Poehler & Co to Buy for Cattle	1000.00
"	27	Check on Dawson & Co July 2 nd	614.00
"	28	By Check on the First National Bank	1000.00
Welch's Expenses on the Devil's Lake			1215

Kahlow remembered leaving for Fort Totten, near Devil's Lake about June 20th. This record kept by Tom Welch in his ledger shows additional wagon and chains were purchased on the 18th.



(Continued from page 1)

in colorful costumes (and some without), their primitive homes and awesome South Pacific scenery. Some of the natives had not seen white people before this group came. It was an outstanding presentation.



Donna Meyer, Ray Meyer and Harriet Traxler

Harriet Traxler donated three of her framed barn photos for door prizes. Charles Lundgren, Ray Meyer and Donna Meyer were the winners in the drawing. Thanks to Harriet!



In addition to being our annual meeting it was a birthday party for Charles Meyer whose birthday happened to fall on that day.

Each year we have held our annual meeting in a different town, and this year it was New Auburn, the last in the series before we start over.

We had a discussion about raising our membership fee. It has been at \$10 for many years. Phones, electricity, heat, cooling, postage have all gone up since then. **It was decided to raise individual membership to \$20 and family to \$25.** If you want to renew now, the old prices will stay in effect until July 1, and then \$10 will only get you 6 months. You can renew up to 5 years ahead if you want to save some money. But we would also

welcome any extra you care to throw in.



Lowell Nagel painted the steps, railings, lattice and the porch. It looks great! Does anyone notice? Yes! Arlene got a letter from Rose Kelm, a neighbor of the museum "Well I wanted to write to you and tell you how nice the steps look going up to the porch at the museum since they were painted. I would say the man did a



good job. He did it all with a brush..." Chuck and Sharon Shimota did some repairs on one of the organs in the music room.

This lovely young lady, Tiffany Reinitz, gave an interesting presentation for the May program, *Pharmacy Through the Ages*. She is also a new member. Judy has great programs for us and we hope you are able to attend some of them.



Sunday June 27 we are having the dedication of our new

(Continued on page 5)



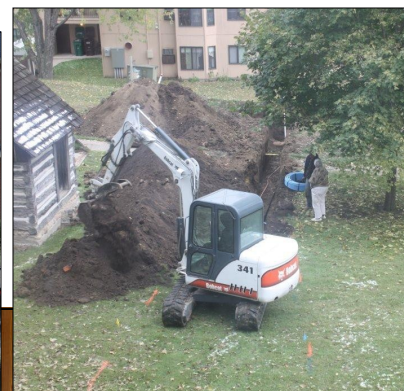
(Continued from page 4)

building addition. Those of us who regularly work at the museum are delighted with the new facilities. We now have places to put things; computer desks, supplies, genealogy materiel, Ostrum Negatives, cleaning supplies and file cabinets to name a few. We have a bathroom with a real lock on the door. We no longer have to string a cord across the room to plug in the microwave. The copy machine doesn't stand in the doorway. None of us is asking for a raise in pay. It will remain at nothing. Lowell Nagel said someone asked him how he got the painting job. He said he was low bidder! I guess that is how we keep our jobs too!

So now we have this dedication coming up on June 27th. It coincides with Henderson Sauerkraut Days, so we are expecting a good turnout to come and see the place. We hope YOU will be there too. After touring the addition and the museum you will be able to try something you rarely get to sample; sauerkraut cake! Now don't let that keep you away. There will be a very short program at 2PM.

Here are a few pictures of the new addition in various stages of construction.

THANKS TO ALL OF YOU WHO CONTRIUTED TO OUR BUILDING FUND RAISER. YOU ARE DEEPLY APPRECIATED BY ALL!



Happy faces enjoying lunch in the new dibs; Gisela, Millie, Sharon, Mary, Marie, Dorothy, Sharon,





THANK YOU

Thanks to Phil and Connie Delzer for adding to our building fund. Thanks to Cecilia Kammon and the Alfsborg Rural Welfare Club for their donations. Thanks for Memorials for Ellsworth Thies from Elaine Thies, Ruth Ann Buck and Sharon Haggemiller. Special thanks to Lowell Nagel for sanding, repairing and painting the front porch, steps, lattice and railing. Thanks to Dwight Grabitske for supplying paint. Thanks to Chuck and Sharon for doing repairs on the organ in the music room. Thanks also to Harriet Traxler for donating 3 of her framed photos for door prizes at our annual meeting. And a big thanks to the Gaylord Hub for selling Bits and Pieces books for us and collecting the money. And lastly thanks to Judy Loewe for trimming the shrubbery on our property. It is a big annual job, and she does it all. And you thought she only did the programs. Thanks to all!!

Dreams Can Come True

By Sharon Haggemiller

The Sibley County Historical Society (SCHS) was formed in 1940 with 24 charter members. The purpose of the organization is to discover, preserve and disseminate knowledge about the history of Sibley County and the State of Minnesota. Members began collecting and donating items belonging to pioneer settlers of Sibley County. These items were first stored at Henderson in the basement of the old courthouse, then upstairs in the fire barn, then back to the basement of the old courthouse. As each space was needed SCHS had to move the collected items. Finally in 1948, SCHS purchased the former A.F. Poehler home to set it up as a Sibley County Historical Museum. Mr. Poehler was a prominent pioneer businessman who had this beautiful brick house built for his family in 1884/85. It stands at the west edge of Henderson along State Hwy 19.

The first job after the purchase was to redecorate and provide showcases for artifacts, as funds allowed. \$1000 was received from the Sibley County Board of County Commissioners for planning and operation cost. Several other local and county organizations volunteered to help redecorate and set up displays. The museum was ready to open to the public on Memorial Day, 1949, as has been the tradition for 60 years.

Members of the Society were to meet on the 4th Tuesday of every month. The first records of the Society were hand written; some were typed, and as technology progressed, SCHS became "computerized" about 12 years ago. A decision was made to use one of our display rooms in the Museum as office space for the new business machines. The most convenient space was a portion of the room where musical instruments are usually displayed. This room also has the double pocket sliding doors which could be closed during open hours. So, in fact, the displays in that room were "off limits" to the general public. The office and filing system expanded over the years, and more space was unavailable. SCHS Board of Directors had been discussing a way to alleviate the problem for many years.

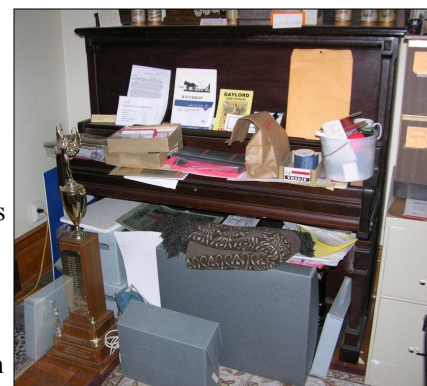
During visits to the museum in the summer and fall of 2008, members Charles and Donna Meyer, former Winthrop residents,

saw the need for extra space of some kind. They donated a substantial amount of money with a suggestion to rent a location off site to use as an office and work space or add onto the existing building. Thus began our search for a solution. It soon became apparent that the best plan would be to build an addition. But where to start? SCHS Board members contacted member Pete Pinske who is the retired owner of Pinske Builders, Gaylord, to guide us in taking the correct steps in pursuing the project. The area around the building was surveyed and several plans were drawn. Our status on the National Register of Historic Places was a necessary consideration. Building plan suggestions involved the Minnesota State Historical Society and the local Henderson Heritage Preservation Commission. A final plan was agreed upon by all and construction pending funding would begin in the fall of 2009. The office addition would give us over 1,000 sq. ft., including a kitchenette, bathroom, genealogy room, storage and work space. With a projected cost of \$150,000, more funds were needed to start the project.

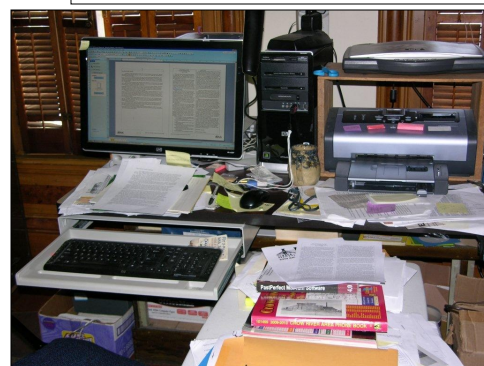
Members of the SCHS Board of directors pledged a portion of the amount. A plea went out to our members with a match of up to \$25,000 from the Meyers. Many members decided to help obtain this goal. The fund drive resulted in receiving donations to cover over ¾ of the cost. With a request to The Sibley County Board of County Commissioners for monetary help to complete the project, the SCHS Board of Directors felt reasonably sure the addition could be started.

Bids were let to contractors throughout the county for various work to be done. Work on the new addition began in September with the digging for water and sewer pipes. Construction on the building progressed during the winter and into the spring of 2010.

The inside is finished, the move has been made and we are ready for our dedication on June 27th.



This is a piano shelf/file



What mess? I don't see no mess.



Yeh! I think we did need some office space



ANNUAL MEETING PHOTOS



Millie Johnson of Gaylord



Mary Beth Egesdal-Gaylord, Margaret Hoffman-Hutchinson, Virginia Heidman-Gaylord, Ruth Mueller of Gaylord



Al and Diane Rostberg of Henderson



An 1897 banner from the New Auburn L. of G.A.R. from the museum's collection

Joan Eckert of Gibbon



Bert and Arline Karels of Henderson and Phil Delzer of Minneapolis



Orville Beuch of Henderson



Becky Briggs of Eagan, Pete and Arlene Pinske of Gaylord



Pat and Dale Erickson of Gibbon



Jan Lundgren-Gibbon, Sharon Haggenmiller-Henderson, Charles and Donna Meyer, Houston TX, Harriet Traxler-Carver



Wayne Pettis of Hutchinson, Janice and Gene Isakson of St. Peter



Mary Salisbury of New Auburn and Mary Petersen of Gibbon



Ruth Ann Buck of Arlington, Judy Loewe of Henderson and Holly Harjes of Green Isle



Nancy Nehl	Gillette WY	Charlie Woehler	Arlington MN
Leo Berger	Henderson MN	Susan M Peters	Minneapolis MN
Kenneth A Huhn	St Peter MN	Gloria Sinell	Gaylord MN
Fred W Lobitz	Hamburg MN	Nelson & Dorothy Norman	El Cajon CA
Phil & Connie Delzer	Minneapolis MN	Janice Parrow	Minneapolis MN
Harold & Lorraine Steeber	Palatine IL	Tom & Patricia McCarthy	Winthrop MN
Connie Fox	St Petersburg FL	Don & Gail Nuessmeier	Arlington MN
Dave Theis	Gibbon MN	Marjorie & Earl Renneke	Le Sueur MN
Kenneth Gleisner	New Ulm MN	Mary Ludowese	Hutchinson MN
Mary Salisbury	New Auburn MN	Judith A Monkkonen	Culver City CA
G R Durenberger	Henderson MN	Marlys Gaucher	Arlington MN
Wayne Pettis	Hutchinson MN	Mary Beth Egesdal	Gaylord MN
P D Steckman	Henderson MN	Bert & Arline Karels	Henderson MN
D B Allen	Tucson AZ	Margaret Hoffman	Hutchinson MN
Mary L Brenke	Albert Lea MN	Eric V Larson	Winthrop MN
Ray & Elizabeth Jacobson	St Peter MN	Patricia J Judd	Waseca MN
Diane D Neubarth	Hutchinson MN	Carol & Lowell Pogatchnik	Finlayson MN
Charles & Janet Lundgren	Gibbon MN	Cliff Zieske	Gibbon MN
Roland Pogatchnik	W St Paul MN	Mildred Johnson	Gaylord MN
Arlene & Edward Pinske	Gaylord MN	Dale & Patricia Ericson	Gibbon MN
Frances Werges	Gaylord MN	Carol Jackson	Eagan MN
LeAnna Sutherland	Grand Rapids MN	Don & Betty Strobel	Henderson MN
Kris & Shane Zeppelin	Litchfield MN		
Maureen & Gordon Krumrey	Glencoe MN		

Membership Form

I would like to become a member of the Sibley County Historical Society.

NAME _____ SCHS TREASURER

ADDRESS _____ 49858 316 ST

_____ Winthrop MN 55396-2038

PHONE _____

E-MAIL _____

Individual--\$20, Family-- \$25, Business-- \$50 Send to:

Check your due date on the mailing label. Membership dues are as stated on the form. Please use it to renew your subscription or pass it along to anyone who is interested.



Regular meetings are held at 7:00 p.m. on the fourth Tuesday of the month, March thru November at the museum in Henderson. The public is invited. The museum is open to the public for tours on Sundays from 2:00 p.m. to 5:00 p.m. June thru October and by appointment.

Send articles, announcements, photos and comments to the SCHS Newsletter, P.O. Box 407, Henderson, MN 56044 or Email: schs1@frontiernet.net





700 Main Street
P.O. Box 407
Henderson, MN 56044
Phone: 507-248-3434
Email: schs1@frontiernet.net

SIBLEY COUNTY HISTORICAL SOCIETY BOARD

Jerome Petersen	President
Dwight Grabitske	Vice-President
Dorothy Peterson	Secretary
Ray Meyer	Treasurer
Sharon Haggemiller	Curator
Judy Loewe	Marie Main
Millie Johnson	Sharon Shimota
Ruth Ann Buck	



WE'RE ON THE WEB!

<http://history.sibley.mn.us>

Sibley County Historical Society Tour June 22nd

Another day filled tour will take place Tuesday, June 22nd, 2010 for the Sibley County Historical Society and other interested public.. Maple Lake will be our first stop to see New Auburn memorabilia, see a few historical movies, artifacts, and hear a very entertaining John Rivers. We will eat at a place called Madigan's and then proceed to Annandale, MN to see their Minnesota Pioneer Park. Kimball, MN will be our next stop to see and hear about their Historical Society which began in 1999. Our last stop will be at the Dassel Historical Museum. This museum is on the National Register of Historic Buildings and has a VERY interesting story to tell.

We plan to leave Winthrop by 7:50 am, Gaylord at 8 am, Arlington by 8:15 am and onward to Maple Lake on Highway 55. We will be heading home on Hwy 15 once we turn off of Hwy 55, stop at Kimball and Dassel and back to highway 19 at Winthrop. Whoever needs to leave a car at Winthrop, Gaylord or Arlington may do so and we'll work it out with volunteer drivers to get you back to your car.

It is necessary to register for this trip as in the past. We will be carpooling, so we will need volunteer drivers, we'll need to know where you want to join the tour group, and be willing to compensate the driver for gas. When registering, think of this as a commitment, a promise to be there without a need to have a big down payment to reserve a place for you. Make this commitment now and not wait for something else to turn up. Too many people miss wonderful opportunities that were planned for their pleasure and wait for something else. Unless you are in the hospital, have a family

funeral or you break a leg, we expect you to be there for the tour. It would be appreciated if everyone could register by June 9th since I will be gone from June 10-17, but I will keep in touch by E-mail until I get back..

Usually each place has a donation policy of a couple of dollars or so. When you register I will get back to each one going on the tour and let you know the amount these places will need. The one at Annandale will probably be the most.

To register, call Judy Loewe at 507-248-3345 or E-mail to gjloewe@frontiernet.net on or before **June 18th**.



SIBLEY COUNTY FAIR

GET THERE OR BE SQUARE

Come visit us at the Sibley County Fair in Arlington, August 4 through the 8th. We hope to be in the Scout building again, same as last year.

